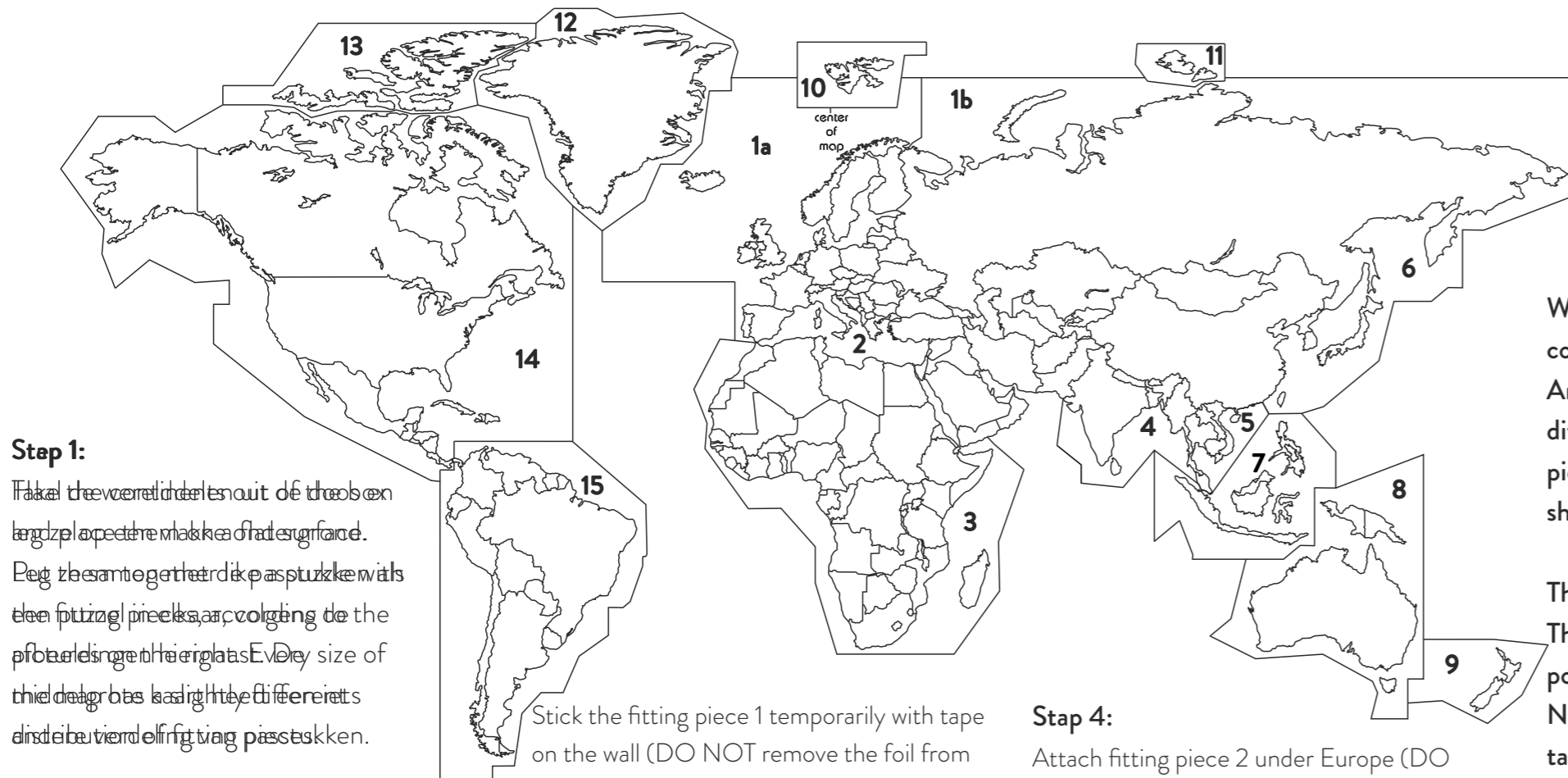


Manual for attaching the world map on the wall



Step 1:

Take the world map out of the box on large paper and make it flat. Put the fitting pieces on a puzzle with the fitting pieces, according to the photo in the right. Every size of the map has a different distribution of fitting pieces.



Step 2:

Determine on the wall where the center of the world map should be. Piece 1 has a line with "center of map". This line is the center of the total width of the world map. Take fitting piece 1 and leave the corresponding parts of the world for a while. Position the fitting piece on the wall so that the line aligns with what you just defined as the center point on the wall, making sure the top is leveled.

Stick the fitting piece 1 temporarily with tape on the wall (DO NOT remove the foil from the double-sided tape!). For the XL world map, this is "1a" and "1b" combined.



Step 3:

Take Europe and Asia and remove the foil from the back. Place the continents in the correct position in the fitting piece against the wall and press it firmly for at least 1 minute. Also do this for the islands that belong in the fitting piece

Step 4:

Attach fitting piece 2 under Europe (DO NOT remove the foil), it will hang without tape. Take the islands that belongs there, remove the foil and stick it in the fitting piece against the wall. Now take Africa, take off the foil and stick the continent on the wall under fitting piece 2, making sure that it fits against the adapter like a puzzle. Press it well for at least 1 minute.



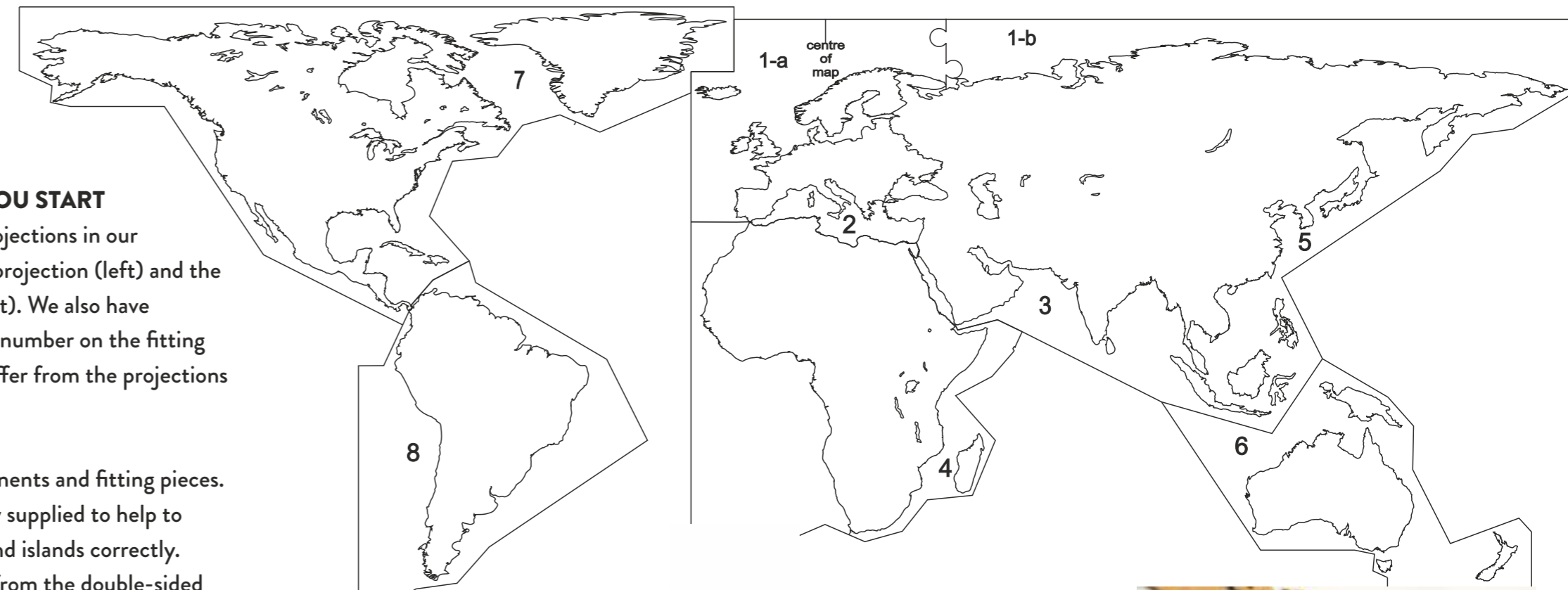
BEFORE YOU START

We have two different projections in our collection, the Mercator projection (left) and the Antarctic projection (right). We also have different sizes, where the number on the fitting pieces and distribution differ from the projections shown in this manual.

The map consists of continents and fitting pieces. The fitting pieces are only supplied to help to position the continents and islands correctly. **NEVER** remove the foil from the double-sided tape with fitting pieces, only attach them to the wall with tape so that they can be easily removed afterwards.

Make sure the wall is grease-free before you start. You can make the wall free of grease by using a paint cleaner, such as St Marc. It is also possible to do this with ammonia or soapy water. Use a cloth and clean the wall from grease and wait till it's dry before you start

Watch our instruction video



Step 5:

The principle remains the same every time; first make sure that the fitting piece is attached, if necessary with tape. It is important that you do NOT remove the foil from the fitting pieces. Then remove the foil from the continent or island and place it in the fitting piece.

Work in order of the numbers of the fittings pieces.

Step 6:

All continents and islands are now attached on the wall. Remove all fitting fittings and tape you used for holding the fittings pieces. Press all the continents and islands firmly again, and you're all done!



Happy with the result? Share it with your friends! Feel free to share your wooden world map on Facebook or Instagram. Do you have any questions? Take a look at the frequently asked questions on our website, or send us an email.



Creative Use of Technology | CREATED WITH PASSION

info@creativeuseoftechnology.com | Reigerstraat 16, 4811 XB Breda, Netherlands | +31 (0)76 7504146